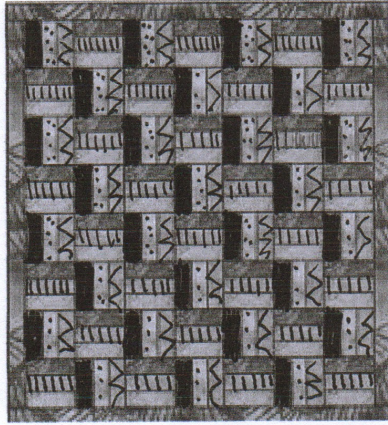


Rail fence (2 blocks)

RSQ Benefit Quilt Night 1/25/11

Split Rail Fence



Twin Quilt 63" x 72" (before borders)

Quilt block: 9" (finished)

Total blocks needed: 56

Layout: 7 blocks across
by 8 blocks down

Fabric needed to make top:

About 6 yards for Blocks A & B

2 yards for borders & binding

This easy quilt top is made from 3.5" strips cut width of fabric (40" +)
It is made of 2 blocks of 3 fabrics each (6 fabrics total)

Cut (7) 3.5" strips from each 7/8 yd of 6 fabrics
You will have a total of (42) 3.5" strips

Separate into 2 groups of 3 strips (Block A and Block B)
Keep fabric placement the same in each strip set
Sew sets of 3 strips together using a 1/4" seam
Make 14 sets of 3 strips sewn together (9.5" wide)
Cut across the sewn strips to make 9.5" blocks
Each strip will make 4 blocks

Make (28) Block A and (28) Block B
(56 blocks total)

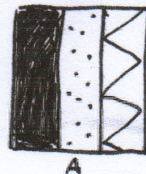
Lay out blocks as shown above:

7 across, 8 down

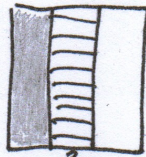
Sew your blocks together

Add borders if desired

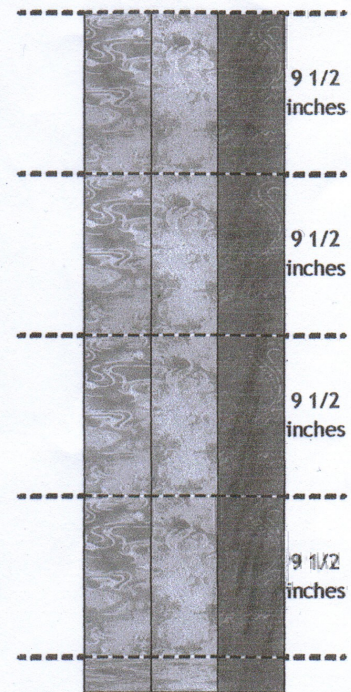
Your top is done!



A



B



To make a double quilt (81" x 90"), you need 90 blocks, set 9 x 10
Fabric needed: about 7.5 yds, cut into (69) 3.5" x WOF strips
For 3 fabrics, you need about 2.5 yds of each, cut into (23) strips each